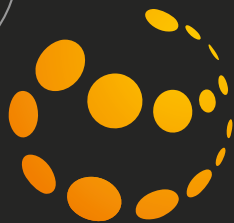


A circular collage of various LED and solar lighting products, including floodlights, spotlights, and solar panels, arranged around a central dark circle.

LED & Solar Solutions



NESSA™
Lighting up miracles.....



About us

Nessa has been founded by people with vast global experience and alumni from IIT Bombay and IIM Ahmedabad. With focus on service and quality, It has grown to be one of the largest Industrial and outdoor lighting solution providers in India and abroad.

Global Network



- | | | | | | |
|-------------|-----------|-----------------|---------------|--------------|-------------|
| •• Ethiopia | •• Ghana | •• Bahrain | •• Sri-Lanka | •• Australia | •• Tanzania |
| •• Nigeria | •• Uganda | •• Oman | •• Bangladesh | •• Dubai | •• Myanmar |
| •• Kenya | •• UAE | •• South Africa | •• Nepal | •• USA | •• Bhutan |

Certifications



BIS



CE Certificate



MNRE NISE



ISO



RoHS



IEC 61000



IEC 62031



LM - 79



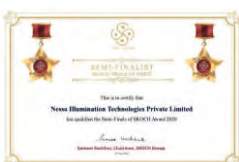
Wind Test Report



IEC 60598

Awards

- Economic Times Young Achiever Award 2018 by SIDBI in association with Economic Times
- Best Technology and Sustainable Development Award by IIT Bombay
- Mother Teresa Excellence Award by Integrated Council for Socio-Economic Progress
- Top 7 companies in clean-tech selected by Power of Ideas in association with Economic Times
- Nominated for Award for Outstanding contribution to national Economic and Social Development by All India Business Development Association
- Pride of India Award 2015 for distinctive achievement in green energy field by Citizens Integration Peace Society
- Bharat Jyoti Award 2015 for distinctive achievement in industrial growth
- Awarded by Adani for promising vendor of the year



AC Outdoor Products

AC LED Street Lights



| PRODUCT CODE | NES-SL-18L | NES-SL-25L | NES-SL-30L | NES-SL-45 |
|-------------------|----------------|----------------|----------------|----------------|
| Watt | 18W | 25W | 30W | 45W |
| Input Range | 110-290 V | 110-290 V | 110-290 V | 110-290 V |
| Output Lumens | ≥ 110 lm/W | ≥ 110 lm/W | ≥ 110 lm/W | ≥ 110 lm/W |
| CRI | >70 | >70 | >70 | >70 |
| THD | <15% | <15% | <10% | <10% |
| Driver Efficiency | >85% | >85% | >85% | >85% |
| IP RATING | ≥65 | ≥65 | ≥65 | ≥66 |
| Dimension | (270X110X55)mm | (270X110X55)mm | (270X110X55)mm | (315X135X50)mm |
| Weight | 0.66 kg | 0.66 kg | 0.66 kg | 1.36 kg |
| ID | 38mm | 38mm | 38mm | 40mm |

Color



Application

Residential Complex, Small trac round - about, Lighting of secondary roads / side roads, Parks & gardens, Security lighting

AC LED Street Lights

| PRODUCT CODE | NES-SL-60L | NES-SL-75L | NES-SL-90 |
|-------------------|----------------|----------------|----------------|
| Watt | 60W | 75W | 90W |
| Input Range | 110-290 V | 110-290 V | 110-290 V |
| Output Lumens | ≥ 110 lm/W | ≥ 110 lm/W | ≥ 110 lm/W |
| CRI | >70 | >70 | >70 |
| THD | <10% | <10% | <10% |
| Driver Efficiency | >87% | >87% | >87% |
| IP RATING | ≥66 | ≥66 | ≥66 |
| Dimension | (255X160X65)mm | (255X160X65)mm | (375X200X50)mm |
| Weight | 1.65 kg | 1.65 kg | 2.80 kg |
| ID | 42 mm | 42 mm | 65 mm |

Color



Application

City roads / Highways, Periphery / Security lighting, Industry campuses, Parking areas, Parks and Gardens



AC Outdoor Products



AC LED Street Lights

| PRODUCT CODE | NES-SL-100 | NES-SL-120 | NES-SL-150 |
|-------------------|------------------|------------------|------------------|
| Watt | 100W | 120W | 150W |
| Input Range | 110-290 V | 110-290 V | 110-290 V |
| Output Lumens | ≥ 110 lm/W | ≥ 110 lm/W | ≥ 110 lm/W |
| CRI | >70 | >70 | >70 |
| THD | <10% | <10% | <10% |
| Driver Efficiency | >87% | >87% | >87% |
| IP RATING | ≥66 | ≥66 | ≥66 |
| Dimension | (440X195X100) mm | (440X195X100) mm | (440X195X100) mm |
| Weight | 2.5 kg | 2.5 kg | 2.5 kg |
| ID | 58 mm | 58 mm | 58 mm |

Color



Application

City roads / Highways, Periphery / Security lighting, Industry campuses, Parking areas, Parks and Gardens

AC LED Street Lights

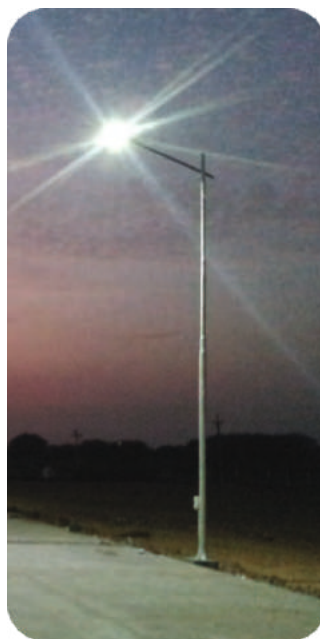
| PRODUCT CODE | NES-SL-200 |
|-------------------|----------------|
| Watt | 200W |
| Input Range | 110-290 V |
| Output Lumens | ≥ 110 lm/W |
| CRI | >70 |
| THD | <10% |
| Driver Efficiency | >87% |
| IP RATING | ≥66 |
| Dimension | (510x290x90)mm |
| Weight | 6.25 kg |
| ID | 60 mm |

Color



Application

City roads / Highways, Periphery / Security lighting, Industry campuses, Parking areas, Parks and Gardens



Subject to change without notification.
For more info visit our website.

www.nessa.in

AC Outdoor Products

AC LED Flood Lights



| PRODUCT CODE | NES-FL-30 | NES-FL-45 | NES-FL-60 | NES-FL-75 |
|-------------------|----------------|----------------|-----------------|-----------------|
| Watt | 30W | 45W | 60W | 75W |
| Input Range | 110-290 V | 110-290 V | 110-290 V | 110-290 V |
| Output Lumens | ≥100 lm/W | ≥110 lm/W | ≥110 lm/W | ≥110 lm/W |
| CRI | >70 | >70 | >70 | >70 |
| THD | <10% | <10% | <10% | <10% |
| Driver Efficiency | >85% | >85% | >87% | >87% |
| IP RATING | ≥66 | ≥66 | ≥66 | ≥66 |
| Dimension | (185X154X48)mm | (285X240X60)mm | (325X185X150)mm | (325X185X150)mm |
| Weight | 0.8 kg | 1.7 kg | 2.65 kg | 2.65 kg |

Color



Application

Lighting of small to medium sized billboards, Parking areas around building /residential complexes, General area lighting, Lighting of monuments.

AC LED Flood Lights

| PRODUCT CODE | NES-FL-100 | NES-FL-120 |
|-------------------|-----------------|-----------------|
| Watt | 100W | 120W |
| Input Range | 110-290 V | 110-290 V |
| Output Lumens | ≥110 lm/W | ≥110 lm/W |
| CRI | >70 | >70 |
| THD | <10% | <10% |
| Driver Efficiency | >87% | >87% |
| IP RATING | ≥66 | ≥66 |
| Dimension | (400X230X140)mm | (400X230X140)mm |
| Weight | 3.3 kg | 3.3 kg |



Color



Application

Lighting of small to medium sized billboards, Parking areas around building /residential complexes, General area lighting, Lighting of monuments.



Subject to change without notification.
For more info visit our website.

AC Outdoor Products



@ AC LED Flood Lights

| PRODUCT CODE | NES-FL-150 | NES-FL-180 | NES-FL-200 |
|-------------------|----------------|----------------|----------------|
| Watt | 150W | 180W | 200W |
| Input Range | 110-290 V | 110-290 V | 110-290 V |
| Output Lumens | ≥ 110 lm/W | ≥ 110 lm/W | ≥ 110 lm/W |
| CRI | >70 | >70 | >70 |
| THD | <10% | <10% | <10% |
| Driver Efficiency | >87% | >87% | >87% |
| IP RATING | ≥66 | ≥66 | ≥66 |
| Dimension | (352X340X65)mm | (352X340X65)mm | (352X340X65)mm |
| Weight | 5.28kg | 5.28kg | 5.28kg |

Color



Application

Highmasts, Container berths, docks, ports, Airport aprons, flyovers & bridges, Railway marshalling yards, Security lighting, sport Lighting, Shopping malls and building facade.

@ AC LED Flood Lights

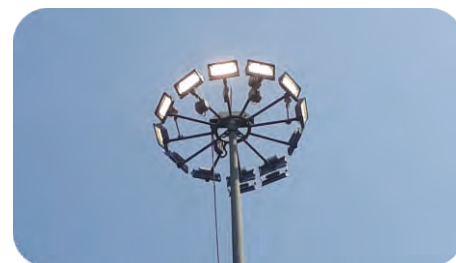
| PRODUCT CODE | NES-FL-250 | NES-FL-300 | NES-FL-350 | NES-FL-400 | NES-FL-500 |
|-------------------|-----------------|----------------|----------------|----------------|-----------------|
| Watt | 250W | 300W | 350W | 400W | 500W |
| Input Range | 110-290 V | 110-290 V | 110-290 V | 110-290 V | 110-290 V |
| Output Lumens | ≥ 110 lm/W | ≥ 110 lm/W | ≥ 110 lm/W | ≥ 110 lm/W | ≥ 110 lm/W |
| CRI | >70 | >70 | >70 | >70 | >70 |
| THD | <10% | <10% | <10% | <10% | <10% |
| Driver Efficiency | >87% | >87% | >87% | >87% | >87% |
| IP RATING | ≥66 | ≥66 | ≥66 | ≥66 | ≥66 |
| Dimension | (670X320X185)mm | (545X465X80)mm | (545X465X80)mm | (545X465X80)mm | (810x325x210)mm |
| Weight | 11.0 kg | 11.8kg | 11.8kg | 11.8kg | 12.5 kg |



Application

Highmasts, Container berths, docks, ports, Airport aprons, flyovers & bridges, Railway marshalling yards, Security lighting, sport Lighting, Shopping malls and building facade.

Color



Subject to change without notification.
For more info visit our website.

www.nessa.in

AC Outdoor Products



@ AC LED Highbay Lights

| PRODUCT CODE | NES-BL-50 | NES-BL-75 |
|-------------------|-----------------|-----------------|
| Watt | 50W | 75W |
| Input Range | 110-290 V | 110-290 V |
| Output Lumens | ≥ 110 lm/W | ≥ 110 lm/W |
| CRI | >70 | >70 |
| THD | <10% | <10% |
| Driver Efficiency | >87% | >87% |
| IP RATING | ≥65 | ≥66 |
| Dimension | D: 180 H:100 mm | (325X185X150)mm |
| Weight | 1.45 kg | 2.65 kg |

Color



Application

Manufacturing bays, Warehouses, Indoor stadiums, Airport hangers, Railway concourse halls and Mines.

@ AC LED Highbay Lights

| PRODUCT CODE | NES-BL-100 | NES-BL-120 |
|-------------------|-----------------|-----------------|
| Watt | 100W | 120W |
| Input Range | 110-290 V | 110-290 V |
| Output Lumens | ≥ 110 lm/W | ≥ 110 lm/W |
| CRI | >70 | >70 |
| THD | <10% | <10% |
| Driver Efficiency | >87% | >87% |
| IP RATING | ≥66 | ≥66 |
| Dimension | D: 375 H:125 mm | D: 375 H:125 mm |
| Weight | 4 kg | 4 kg |

Color



Application

Manufacturing bays, Warehouses, Indoor stadiums, Airport hangers, Railway concourse halls and Mines.



AC Outdoor Products



AC LED Highbay Lights

| PRODUCT CODE | NES-BL-150 | NES-BL-200 |
|-------------------|----------------|----------------|
| Watt | 150W | 200W |
| Input Range | 110-290 V | 110-290 V |
| Output Lumens | ≥ 110 lm/W | ≥ 110 lm/W |
| CRI | >70 | >70 |
| THD | <10% | <10% |
| Driver Efficiency | >87% | >87% |
| IP RATING | ≥66 | ≥66 |
| Dimension | D:320 H:115 mm | D:320 H:115 mm |
| Weight | 3.86 kg | 3.86 kg |

Color



Application

Manufacturing bays, Warehouses, Indoor stadiums, Airport hangers, Railway concourse halls and Mines.

AC LED Well Glass

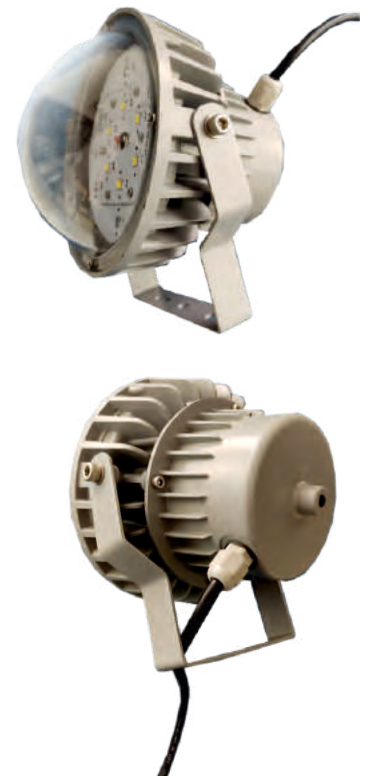
| PRODUCT CODE | ENES-WELL-30 | ENES-WELL-40 | ENES-WELL-60 | ENES-WELL-75 |
|-------------------|----------------|----------------|----------------|----------------|
| Watt | 30W | 40W | 60W | 75W |
| Input Range | 110-290 V | 110-290 V | 110-290 V | 110-290 V |
| Output Lumens | ≥ 110 lm/W | ≥ 110 lm/W | ≥ 110 lm/W | ≥ 110 lm/W |
| CRI | >70 | >70 | >70 | >70 |
| THD | <10% | <10% | <10% | <10% |
| Driver Efficiency | >85% | >85% | >87% | >87% |
| IP RATING | ≥66 | ≥66 | ≥66 | ≥66 |
| Dimension | D:170 H:160 mm | D:170 H:160 mm | D:220 H:220 mm | D:220 H:220 mm |
| Weight | 1.12 kg | 1.12 kg | 2 kg | 2 kg |

Color



Application

Industrial areas, Ware house, Manufacturing unit



Subject to change without notification.
For more info visit our website.

AC Outdoor Products



AC LED Flame Proof

| PRODUCT CODE | NES-FLP-30 |
|-------------------|------------|
| Watt | 30w |
| Input Range | 110-290 V |
| Output Lumens | ≥ 110 lm/W |
| CRI | >70 |
| THD | <10% |
| Driver Efficiency | >85% |
| IP RATING | ≥65 |
| Weight | 6.35 kg |



Color



Application

Oil & Gas Industries, Cement Plant

AC LED Canopy Light

| PRODUCT CODE | NES-CAN-75 | NES-CAN-200 |
|-------------------|-----------------|-----------------|
| Watt | 75W | 200 W |
| Input Range | 110-290 V | 110-290 V |
| Output Lumens | ≥ 110 lm/W | ≥ 110 lm/W |
| CRI | >70 | >70 |
| THD | <10% | <10% |
| Driver Efficiency | >87% | >87% |
| IP RATING | ≥66 | ≥66 |
| Dimension | (325X185X150)mm | (400X230X140)mm |
| Weight | 2.65 Kg | 3.3 kg |



Application

Petrol and service stations, Parking area

Color



Other Features:

- Single Piece MCPCB with Thermal Pads
- High Pressure Aluminium DieCast
- PF ≥0.95
- 35°C Storage Temperature
- >50000 Hrs Working Life
- "Secondary optics for better light distribution."
- Driver Protection against Auto Shutdown & Auto Restart, Open & Short Circuit Protection, Over Voltage Protection
- Impact resistance: IK07
- Surge Protection: ≥4.5KV (Built in)
- Provide 10KV External Surge Protection (Separate, if Required)



Subject to change without notification.
For more info visit our website.

www.nessa.in

Fission Series

Fission LED Street Light



| PRODUCT CODE | ENES-SL-15 | ENES-SL-24 | ENES-SL-36 | ENES-SL-45 | ENES-SL-60 | ENES-SL-75 |
|-------------------|------------|------------|------------|------------|------------|------------|
| Watt | 15 W | 24 W | 36 W | 45 W | 60 W | 75 W |
| Input Range | 90 - 270 V | 90 - 270 V | 90 - 270 V | 90 - 270 V | 90 - 270 V | 90 - 270 V |
| Output Lumens | ≥100 lm/W | ≥100 lm/W | ≥100 lm/W | ≥100 lm/W | ≥100 lm/W | ≥100 lm/W |
| CRI | ≥80 | ≥80 | ≥80 | ≥80 | ≥80 | ≥80 |
| THD | <12% | <12% | <12% | <12% | <12% | <12% |
| Driver Efficiency | >85% | >85% | >85% | >85% | >87% | >87% |
| IP RATING | IP65 | IP65 | IP65 | IP65 | IP65 | IP65 |

Subject to change without notification.

| PRODUCT CODE | ENES-SL-90 | ENES-SL-120 | ENES-SL-150 |
|-------------------|------------|-------------|-------------|
| Watt | 90 W | 120 W | 150 W |
| Input Range | 90 - 270 V | 90 - 270 V | 90 - 270 V |
| Output Lumens | ≥100 lm/W | ≥100 lm/W | ≥100 lm/W |
| CRI | ≥80 | ≥80 | ≥80 |
| THD | <12% | <12% | <12% |
| Driver Efficiency | >87% | >87% | >87% |
| IP RATING | IP65 | IP65 | IP65 |

Subject to change without notification.



Fission Flood Light



| PRODUCT CODE | ENES-FL-10 | ENES-FL-20 | ENES-FL-30 | ENES-FL-50 | ENES-FL-100 | ENES-FL-150 | ENES-FL-200 |
|-------------------|------------|------------|------------|------------|-------------|-------------|-------------|
| Watt | 10 W | 20 W | 30 W | 50 W | 100 W | 150 W | 200 W |
| Input Range | 90 - 270 V | 90 - 270 V | 90 - 270 V | 90 - 270 V | 90 - 270 V | 90 - 270 V | 90 - 270 V |
| Output Lumens | ≥100 lm/W | ≥100 lm/W | ≥100 lm/W | ≥100 lm/W | ≥100 lm/W | ≥100 lm/W | ≥100 lm/W |
| CRI | >80 | >80 | >80 | >80 | >80 | >80 | >80 |
| THD | <10% | <10% | <10% | <10% | <10% | <10% | <10% |
| Driver Efficiency | >85% | >85% | >85% | >87% | >87% | >87% | >87% |
| IP RATING | IP65 | IP65 | IP65 | IP65 | IP65 | IP65 | IP65 |

Subject to change without notification.
For more info visit our website.

Solar Products



Subject to change without notification.
For more info visit our website.

Solar Products

② Semi Integrated Solar LED Street Light (Two in one)



Color



Driver Features

Intelligent dimming during monsoon | 2 Stage Battery Level Indication | Over Voltage Protection, Reverse Polarity Protection, Over Charging and deep Discharging Protection, Extra battery zero voltage protection | General Dimming also available | Charging and low battery indication | Dusk to Dawn | Fast charging | No battery theft | Maintenance free

| PRODUCT CODE | NES-LION-12 | NES-LION-15 |
|-------------------|-----------------|-----------------|
| Watt | 12W | 15W |
| Solar Panel | 40W | 40W |
| Output Lumens | ≥ 110 lm/W | ≥ 110 lm/W |
| CRI | >70 | >70 |
| Driver Efficiency | >85% | >85% |
| IP RATING | ≥65 | ≥65 |
| Dimension | (250X105X115)mm | (250X105X115)mm |
| Weight | 3.2 kg | 3.2 kg |
| ID | 42 mm | 42 mm |

| PRODUCT CODE | NES-LIFE-12 | NES-LIFE-15 | NES-LIFE-18 | NES-LIFE-24 |
|-------------------|-----------------|-----------------|-----------------|-----------------|
| Watt | 12W | 15W | 18W | 24W |
| Solar Panel | 40W | 40W | 50W | 75W |
| Output Lumens | ≥ 110 lm/W | ≥ 110 lm/W | ≥ 110 lm/W | ≥ 110 lm/W |
| CRI | >70 | >70 | >70 | >70 |
| Driver Efficiency | >85% | >85% | >85% | >85% |
| IP RATING | ≥66 | ≥66 | ≥66 | ≥66 |
| Dimension | (410X145X140)mm | (410X145X140)mm | (410X145X140)mm | (410X145X140)mm |
| Weight | 2.8 kg | 2.8 kg | 2.8 kg | 3.5 kg |
| ID | 54 mm | 54 mm | 54 mm | 54 mm |



Color



Driver Features

Intelligent dimming during monsoon | 2 Stage Battery Level Indication | Over Voltage Protection, Reverse Polarity Protection, Over Charging and deep Discharging Protection, Extra battery zero voltage protection | General Dimming also available | Charging and low battery indication | Dusk to Dawn | Fast charging | No battery theft | Maintenance free



Subject to change without notification.
For more info visit our website.

www.nessa.in

Solar Products



Ⓢ Semi Integrated Solar LED Street Light (Two in one)

| PRODUCT CODE | NES-LIFE-30 | NES-LIFE-45 | NES-LIFE-60 |
|-------------------|-----------------|-----------------|-----------------|
| Watt | 30W | 45W | 60W |
| Solar Panel | 75W | 150W | 150W |
| Output Lumens | ≥ 110 lm/W | ≥ 110 lm/W | ≥ 110 lm/W |
| CRI | >70 | >70 | >70 |
| Driver Efficiency | >85% | >85% | >85% |
| IP RATING | ≥66 | ≥66 | ≥66 |
| Dimension | (410X145X140)mm | (410X145X140)mm | (410X145X140)mm |
| Weight | 3.5 kg | 4.9 kg | 4.9 kg |
| ID | 54mm | 54mm | 54mm |

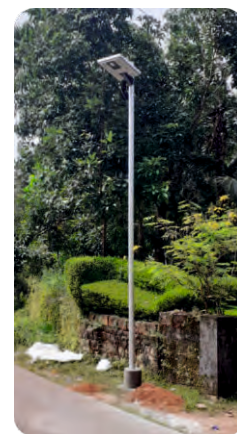


Driver Features

Intelligent dimming during monsoon | 2 Stage Battery Level Indication | Over Voltage Protection, Reverse Polarity Protection, Over Charging and deep Discharging Protection, Extra battery zero voltage protection | General Dimming also available | Charging and low battery indication | Dusk to Dawn | Fast charging | No battery theft | Maintenance free

Ⓢ Integrated Solar Street Light (All in one)

| PRODUCT CODE | NES-LIA-12 | NES-LIA-15 | NES-LIA-18 |
|-------------------|--------------|--------------|--------------|
| Watt | 12W | 15W | 18W |
| Solar Panel | 40W | 40W | 40W |
| Output Lumens | ≥ 110 lm/W | ≥ 110 lm/W | ≥ 110 lm/W |
| CRI | >70 | >70 | >70 |
| Driver Efficiency | >85% | >85% | >85% |
| IP RATING | ≥65 | ≥65 | ≥65 |
| Dimension (mm) | (665X460X55) | (665X460X55) | (665X460X55) |
| Weight | 9.8 kg | 9.8 kg | 9.8kg |



Driver Features

Intelligent dimming during monsoon | 2 Stage Battery Level Indication | Over Voltage Protection, Reverse Polarity Protection, Over Charging and deep Discharging Protection, Extra battery zero voltage protection | General Dimming also available | Charging and low battery indication | Dusk to Dawn | Fast charging | No battery theft | Maintenance free



Subject to change without notification.
For more info visit our website.

www.nessa.in

Solar Products



@ Integrated Solar Street Light (All in one)

| PRODUCT CODE | NES-LIA-24 | NES-LIA-30 | NES-LIA-40 |
|-------------------|----------------|----------------|----------------|
| Watt | 24W | 30W | 40W |
| Solar Panel | 60W | 60W | 75W |
| Output Lumens | ≥ 110 lm/W | ≥ 110 lm/W | ≥ 110 lm/W |
| CRI | >70 | >70 | >70 |
| Driver Efficiency | >85% | >85% | >85% |
| IP RATING | ≥65 | ≥65 | ≥65 |
| Dimension (mm) | (665X620X60)mm | (665X620X60)mm | (775X670X60)mm |
| Weight | 10.6kg | 10.6kg | 12.38kg |

Color



Driver Features

Intelligent dimming during monsoon | 2 Stage Battery Level Indication | Over Voltage Protection, Reverse Polarity Protection, Over Charging and deep Discharging Protection, Extra battery zero voltage protection | General Dimming also available | Charging and low battery indication | Dusk to Dawn Fast charging | No battery theft | Maintenance free

@ Integrated Solar Street Light (All in one)

| PRODUCT CODE | NES-LIA-60 |
|-------------------|---------------|
| Watt | 60W |
| Solar Panel | 150W |
| Output Lumens | ≥ 110 lm/W |
| CRI | >70 |
| Driver Efficiency | >85% |
| IP RATING | ≥65 |
| Dimension (mm) | (1600X750X55) |
| Weight | 28kg |



Color



Driver Features

Intelligent dimming during monsoon | 2 Stage Battery Level Indication | Over Voltage Protection, Reverse Polarity Protection, Over Charging and deep Discharging Protection, Extra battery zero voltage protection | General Dimming also available | Charging and low battery indication | Dusk to Dawn Fast charging | No battery theft | Maintenance free



Subject to change without notification.
For more info visit our website.

Solar Products



@ Solar LED Street Light

| PRODUCT CODE | NES-SSL-12 | NES-SSL-15 | NES-SSL-18 |
|-------------------|----------------|----------------|----------------|
| Watt | 12W | 15W | 18W |
| Solar Panel | 40W | 50W | 75W |
| Battery | 42 ah | 42 ah | 65 ah |
| Output Lumens | ≥ 110 lm/W | ≥ 110 lm/W | ≥ 110 lm/W |
| CRI | >70 | >70 | >70 |
| Driver Efficiency | >85% | >85% | >85% |
| IP RATING | ≥65 | ≥65 | ≥65 |
| Dimension | (270X110X55)mm | (270X110X55)mm | (270X110X55)mm |
| Weight | 0.66 kg | 0.66 kg | 0.66 kg |
| ID | 38 mm | 38 mm | 38 mm |

Color



Driver Features

Intelligent dimming during monsoon | 2 Stage Battery Level Indication | Over Voltage Protection, Reverse Polarity Protection, Over Charging and deep Discharging Protection, Extra battery zero voltage protection | General Dimming also available | Charging and low battery indication | Dusk to Dawn

@ Solar LED Street Light

| PRODUCT CODE | NES-SSL-24 |
|-------------------|----------------|
| Watt | 24W |
| Solar Panel | 75W |
| Battery | 75 ah |
| Output Lumens | ≥ 110 lm/W |
| CRI | >70 |
| Driver Efficiency | >85% |
| IP RATING | ≥66 |
| Dimension | (270X110X55)mm |
| Weight | 0.8kg |
| ID | 35mm |

Color



Driver Features

Intelligent dimming during monsoon | 2 Stage Battery Level Indication | Over Voltage Protection, Reverse Polarity Protection, Over Charging and deep Discharging Protection, Extra battery zero voltage protection | General Dimming also available | Charging and low battery indication | Dusk to Dawn



Subject to change without notification.
For more info visit our website.

www.nessa.in

Solar Products

Solar LED Street Light



| PRODUCT CODE | NES-SSL-30 | NES-SSL-40 | NES-SSL-60 |
|-------------------|----------------|----------------|----------------|
| Watt | 30W | 40W | 60W |
| Solar Panel | 100W | 24V 200W | 24V 250W |
| Battery | 100 ah | 2x12V 75ah | 2x12V 100ah |
| Output Lumens | ≥ 110 lm/W | ≥ 110 lm/W | ≥ 110 lm/W |
| CRI | >70 | >70 | >70 |
| Driver Efficiency | >85% | >85% | >85% |
| IP RATING | ≥66 | ≥66 | ≥66 |
| Dimension | (315X135X50)mm | (395X220X70)mm | (395X220X70)mm |
| Weight | 1.36 kg | 2.80 kg | 2.80 kg |
| ID | 44 mm | 60 mm | 60 mm |

Color



Driver Features

Intelligent dimming during monsoon | 2 Stage Battery Level Indication | Over Voltage Protection, Reverse Polarity Protection, Over Charging and deep Discharging Protection, Extra battery zero voltage protection | General Dimming also available | Charging and low battery indication | Dusk to Dawn Fast charging | No battery theft | Maintenance free

Solar LED Street Light

| PRODUCT CODE | NES-SSL-90 |
|-------------------|------------------|
| Watt | 90W |
| Solar Panel | 24V 400W |
| Battery | 2x12V 200ah |
| Output Lumens | ≥ 110 lm/W |
| CRI | >70 |
| Driver Efficiency | >85% |
| IP RATING | ≥66 |
| Dimension | (440X195X100) mm |
| Weight | 2.5 kg |
| ID | 58 mm |



Color



Driver Features

Intelligent dimming during monsoon | 2 Stage Battery Level Indication | Over Voltage Protection, Reverse Polarity Protection, Over Charging and deep Discharging Protection, Extra battery zero voltage protection | General Dimming also available | Charging and low battery indication | Dusk to Dawn Fast charging | No battery theft | Maintenance free



Subject to change without notification.
For more info visit our website.



Solar Products



☉ Solar Pump - NES-PMP

- Available in 1 HP to 50 HP
- Integrated MPPT (Maximum power point tracking)
- High efficient solar photovoltaic panels with minimum 25 year service life
- High sand protection
- High wear resistance
- Robust galvanize steel mounting structure
- Virtually no maintenance cost

Features :

- Three phase low voltage and high voltage AC submersible pump
- MPPT VFD pump controller
- Low maintenance of pump
- AC motor
- Soft starter feature prevents water hammering and increases system life
- Easy to install
- GI structure with the manually movable option

| HP | Stage | HEAD (m) | Discharge (Imp) | Total System (Watt) |
|----|--------------|----------------|--------------------|---------------------|
| 2 | 6, 8, 9, 13 | 20, 30, 50, 70 | 244, 157, 93, 63 | 2100 |
| 3 | 3, 5, 12, 15 | 20, 30, 50, 70 | 350, 224, 133, 91 | 3000 |
| 5 | 4, 4, 7, 10 | 20, 30, 50, 70 | 560, 358, 212, 145 | 4800 |



Subject to change without notification.
For more info visit our website.

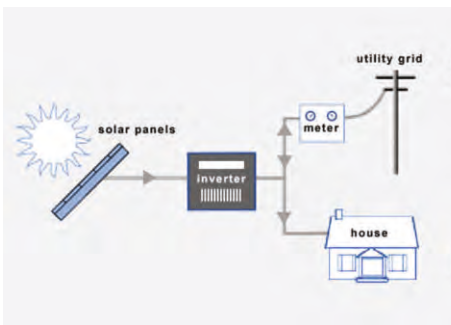
Solar Products



Solar Power Packs

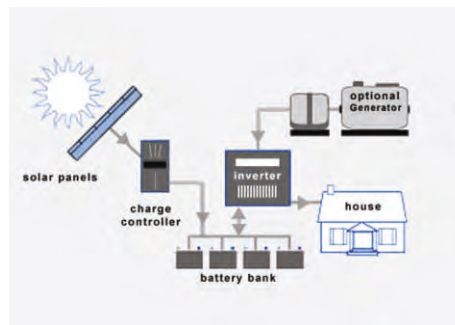
Nessa specializes in designing and installing solar power packs for industries, residential societies, individual houses, campuses etc. The system installation is done so as to offer maximum economic value to the customer.

Being MNRE channel partner, Nessa can help the customer avail subsidies as well as seamless and smooth service support.



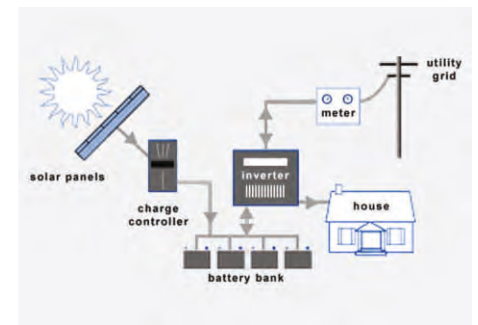
Grid-tied Solar System

On-grid or grid-tie solar systems are by far the most common and widely used by homes and businesses. These systems are connected to the public electricity grid and do not require battery storage. Any solar power that you generate from an on-grid system (which is not used directly in your home) is exported onto the electricity grid and you usually get paid a feed-in-tariff (FiT) for the energy that you export.



Off-Grid Solar System

An off-grid system is not connected to the electricity grid and therefore requires battery storage. An off-grid solar system must be designed appropriately so that it will generate enough power throughout the year and have enough battery capacity to meet the home's requirements, even in the depths of winter when there is less sunlight. The high cost of batteries and inverters means off-grid systems are much more expensive than on-grid systems and so are usually only needed in more remote areas that are far from any electricity grid. However battery costs are reducing rapidly, so there is now a growing market for off-grid solar battery systems even in cities and towns.



Hybrid System

Due to the decreasing cost of battery storage, systems that are already connected to the electricity grid can start taking advantage of battery storage as well. This means being able to store solar energy that is generated during the day and using it at night. When the stored energy is depleted, the grid is there as a back-up, allowing consumers to have the best of both worlds.

Applications



Subject to change without notification.
For more info visit our website.

www.nessa.in

Indoor Products



@ 9W: Rechargeable Bulb

| | |
|----------------|------------------|
| Rated Wattage | 9W |
| Input Voltage | 95-240V AC, 50HZ |
| Lumens | 900LM |
| Beam Angel | 180° |
| Operation Temp | -20~600C |
| Color Temp | 6500 K |
| Battery Size | 3.7v, 2200mah |
| Backup | 4 HOURS |
| Battery Type | LI-ION BATTERY |



@ Tube Light

| | |
|-------------------|-------------------|
| Watt | 10W,18W,22W |
| Input Range | 95V-295V AC |
| Output Lumens | >100 lm/W |
| CRI | >80 |
| Driver Efficiency | >85% |
| PF | >0.95 |
| Working Life | 50000 Hrs |
| Dimensions | 1ft , 2 ft , 4 ft |

@ 5W: DC Rechargeable Tube Light

Specs

| | |
|-------------------------|----------------|
| Dimension | 300X22X40mm |
| Wattage | 3W, 5W, 7W |
| Solar Panel | 9V 3W |
| Battery | Inbuilt Li-ion |
| Net Power Consumption | 5 ± 10% W |
| LED Luminous Efficacy>= | 115 lm/W |

Optical

| | |
|------------------------------|-------------|
| Light Source OSRAM/EVERLIGHT | |
| Colour Temperature | 2700-6500 K |
| CRI | >70 |

Environmental

| | |
|--------------------------|-------------|
| Max. Temperature of Body | 70° C |
| Max. Ambient Temperature | 50°C |
| Working Life | >50000 Hrs. |

Accessories

Light with in build battery and controller Mechanism, Solar Panel and adapter



3 Different Model Available

- High Brightness tubelight
- High Back-up tubelight
- Long life tubelight

Application

This portable Solar LED Tube light can be very useful during your camp, beach, backyard, or even at your house during an power outage. The light is also ideal for camping, reading, entertaining, in car or as an emergency light.

Subject to change without notification.
For more info visit our website.





Indoor Light Products



LED Spike Light

| Watts | Luminous Flux | Dimension |
|-------|---------------|-----------|
| (W) | (lm) | Φ*L(mm) |
| 5W | 420lm | Φ58X75 |



LED Surface Light (Square)

| Watts | Dimension |
|-------|------------|
| 6W | 110x110x35 |
| 12W | 160x160x35 |
| 15W | 160x160x35 |
| 22W | 215x215x35 |



LED Panel light (Square)

| Watts (W) | Dimension (mm) | Hole size (mm) |
|-----------|----------------|----------------|
| 6W | 120*120*21 | 100*100 |
| 12W | 170*170*21 | 150*150 |
| 15W | 170*170*21 | 150*150 |
| 22W | 225*225*21 | 200*200 |



LED Down Light

| Watts | Luminous Flux | Dimension | Hole size |
|-------|---------------|-----------|-----------|
| (W) | (lm) | Φ*L(mm) | (mm) |
| 9W | 900 lm | Φ90X70 | Φ75 |
| 16W | 1600lm | Φ110X80 | Φ95 |
| 30W | 3000lm | Φ160X85 | Φ145 |



LED Surface Light (Round)

| Watts | Dimension |
|-------|-----------|
| (W) | Φ*L(mm) |
| 6W | Φ110*30 |
| 12W | Φ160*35 |
| 15W | Φ160*35 |
| 22W | Φ215*35 |



LED Panel light (Round)

| Watts (W) | Dimension Φ*L(mm) | Hole size (mm) |
|-----------|-------------------|----------------|
| 6W | Φ120*25 | Φ100 |
| 12W | Φ170*25 | Φ150 |
| 15W | Φ170*25 | Φ150 |
| 22W | Φ225*21 | Φ200 |

Other Features

| | |
|----------------------------------|----------|
| Input Range | 95V-240V |
| Operating Frequency | 50Hz ±3% |
| Power Factor | >0.90 |
| Efficiency | >85% |
| CRI | >80 |
| Maximum Temperature of Heat Sink | 65° C |

| | |
|---------------------------|------------------------|
| Color | Cool White, Warm White |
| Color Temperature | 2700-7000 K |
| Beam Angle (led) | 120° |
| Working Life | 25000 Hrs |
| Internal Surge Protection | 2.5KV |
| Body | Aluminum Die Casting |
| Standard Warranty | 2 Years |
| Luminaire Color | White |



Subject to change without notification.
For more info visit our website.

Other Outdoor Products

@ RGB Light & Wallwasher

Available up to 50w to 100w



Available up to 20W to 80W



@ Traffic Blinker Light (NES-TBL-9)

LED Power
Lumens Output
Voltage Range
Life

9W-12W
90 lm/W
90-275V AC
60,000 Hours



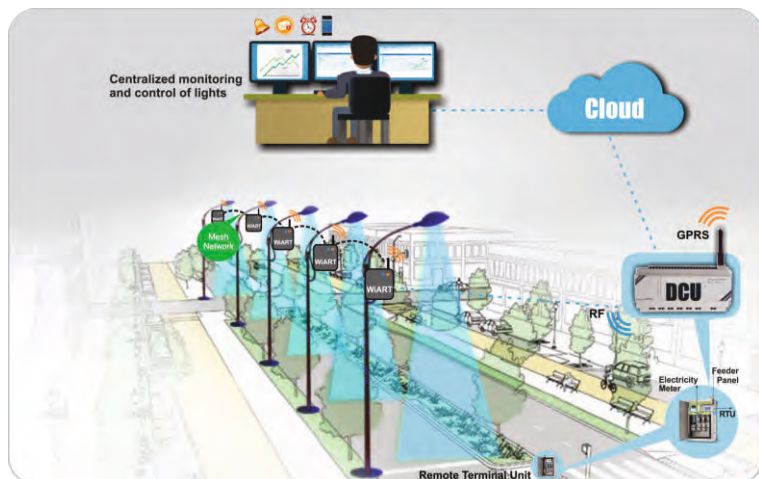
Blinkers available in
Red, Orange & Green

*All Customize Solutions are Available

@ Smart Lighting Solutions

As the world moves towards smart, easy to monitor and easy to operate systems, need for smart solution for lighting technology has arisen. This "Smartification" enables illumination of various urban areas precisely. It helps not only in reducing electricity consumption but also in increasing reliability of systems.

We specialize in smart lighting using GSM, GPRS, RF and Wifi technologies.



@ 120W : Streetlight

| PRODUCT CODE | NES-SL-120 |
|-------------------|------------------|
| Watt | 120W |
| Output Lumens | >120 lm/W |
| CRI | >70 |
| Driver Efficiency | >87% |
| IP RATING | ≥66 |
| Dimension | (440X195X100) mm |
| Weight | 2.5 kg |

@ Street Vendor Light

| | | |
|-------------------|------------------|------------------|
| Watt | 10W | 7 W |
| Input Range | 12V DC | 12V DC |
| Output Lumens | >100 lm/W | >100 lm/W |
| CRI | >70 | >70 |
| Driver Efficiency | >88% | >88% |
| IP Rating | ≥ 65 | ≥ 65 |
| Dimension | (250X100X115) mm | (250X100X115) mm |
| Operating Hours | 4 Hours | 5 Hours |

Stand height Adjustable from 75-95 cm



Subject to change without notification.
For more info visit our website.

Electronics

AC LED Drivers

These drivers having rated power ranging from 18W to 200W come with wide voltage and current range allowing customized operating configuration and intelligent control options for OEMs. Its compact size and excellent thermal management help OEMs reduce size of their end product, without compromising quality, resulting in significant cost savings. They are typically used in outdoor and industrial applications to meet the required performance, with uncompromising safety and sustainability.



18W



30W



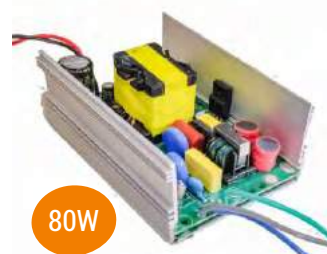
45W

| Driver | 18W | | | 30W | | | 45W | |
|---------------|-----------------|-----------------|-----------------|-----------------|-----------------|-----------------|-----------------|-----------------|
| Model Name | NES-DAC-18-1836 | NES-DAC-18-4060 | NES-DAC-18-6080 | NES-DAC-30-1730 | NES-DAC-30-2853 | NES-DAC-30-5080 | NES-DAC-45-3656 | NES-DAC-45-6080 |
| Voltage Range | 18-36V | 40-60V | 60-80V | 17-30V | 28-53V | 50-80V | 36-56V | 60-80V |
| Current | 600-800 mA | 300-500 mA | 200-350 mA | 500-1000 mA | 600-1000 mA | 180-400 mA | 600-800 mA | 400-600 mA |
| Input Power | 12-24W | 12-24W | 12-24W | 12-35W | 12-35W | 12-35W | 35-48W | 35-48W |
| Dimension | 70x45x25 mm | 70x45x25 mm | 70x45x25 mm | 70x45x25 mm | 70x45x25 mm | 70x45x25 mm | 80x45x30 mm | 80x45x30 mm |
| PF | ≥0.95 | ≥0.95 | ≥0.95 | ≥0.95 | ≥0.95 | ≥0.95 | ≥0.95 | ≥0.95 |
| Efficiency | ≥85% | ≥85% | ≥85% | ≥85% | ≥85% | ≥85% | ≥85% | ≥85% |
| THD | ≤10 | ≤10 | ≤10 | ≤10 | ≤10 | ≤10 | ≤10 | ≤10 |

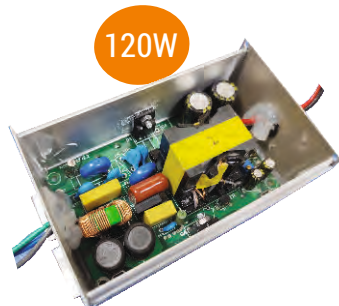
| Driver | 60W | | |
|---------------------|-----------------|-----------------|-----------------|
| Model Name | NES-DAC-60-2742 | NES-DAC-60-3656 | NES-DAC-60-6080 |
| Voltage Range | 27-42V | 36-56V | 60-80V |
| Current | 1200-1400 mA | 900-1400 mA | 600-800 mA |
| Input Power | 45-65W | 45-65W | 45-65W |
| Dimension | 100x65x30 mm | 100x65x30 mm | 100x65x30 mm |
| Dimming mode | AVAILABLE 0-10V | AVAILABLE 0-10V | AVAILABLE 0-10V |
| PF | ≥0.95 | ≥0.95 | ≥0.95 |
| Efficiency | ≥87% | ≥87% | ≥87% |
| THD | ≤10 | ≤10 | ≤10 |
| Operating Frequency | 50/60 Hz | 50/60 Hz | 50/60 Hz |



60W



80W



120W

| Driver | 80W | | 120W | | |
|---------------------|-----------------|-----------------|------------------|------------------|-------------------|
| Model Name | NES-DAC-75-3656 | NES-DAC-75-6080 | NES-DAC-120-3656 | NES-DAC-120-5075 | NES-DAC-120-75105 |
| Voltage Range | 36-56V | 60-80V | 36-56V | 50-75V | 75-105V |
| Current | 1000-1500 mA | 600-1000 mA | 1600-2100 mA | 1200-1500 mA | 600-950 mA |
| Input Power | 65-80W | 65-80W | 80-120W | 80-120W | 80-120W |
| Dimension | 100x65x40 mm | 100x65x40 mm | 100x65x40 mm | 100x65x40 mm | 100x65x40 mm |
| Dimming mode | AVAILABLE 0-10V | AVAILABLE 0-10V | AVAILABLE 0-10V | AVAILABLE 0-10V | AVAILABLE 0-10V |
| PF | ≥0.95 | ≥0.95 | ≥0.95 | ≥0.95 | ≥0.95 |
| Efficiency | ≥87% | ≥87% | ≥87% | ≥87% | ≥87% |
| THD | ≤10 | ≤10 | ≤10 | ≤10 | ≤10 |
| Operating Frequency | 50/60 Hz | 50/60 Hz | 50/60 Hz | 50/60 Hz | 50/60 Hz |

Electronics



200W

| Driver | 200W |
|---------------------|------------------|
| Model Name | NES-DAC-200-4660 |
| Voltage Range | 46-60V |
| Current | 2800-3300 mA |
| Input Power | 150-200W |
| Potting | AVAILABLE |
| Dimension | 200x65x30 mm |
| Dimming mode | AVAILABLE 0-10V |
| PF | ≥0.95 |
| Efficiency | ≥87% |
| THD | ≤10 |
| Operating Frequency | 50/60 Hz |

Application:

LED Street lighting, industrial lighting,
Stadium lighting, Ware house lighting,
Indoor Lighting

Feature:

- Short circuit, LED Open voltage, Over voltage, Over temperature protection
- Available in Plastic, MS or Aluminum Extrusion casing
- Potted drivers available in IP66
- Withstand surge upto 6kV
- Suitable for dry and wet locations
- Extremely compact dimensions for flexible usage
- Compliance with safety standard IS 15885 Part 2 sec 13
- Compliance with EMC standards IEC 61 547

Dimmable Drive

Smart and IOT are the name of the game these days. Nessa offers a wide range of fully programmable drivers ranging from 80W to 120W with universal voltage and current range. These programmable LED drivers come with PWM and analog-based smart dimming features.



80W



120W

| Driver | 80W | | 120W | | |
|---------------------|-----------------|-----------------|------------------|------------------|-------------------|
| Model Name | NES-DAC-75-3656 | NES-DAC-75-6080 | NES-DAC-120-3656 | NES-DAC-120-5075 | NES-DAC-120-75105 |
| Voltage Range | 36-56V | 60-80V | 36-56V | 50-75V | 75-105V |
| Current | 1000-1500 mA | 600-1000 mA | 1600-2100 mA | 1200-1500 mA | 600-950 mA |
| Dimension | 100x65x40 mm | 100x65x40 mm | 100x65x40 mm | 100x65x40 mm | 100x65x40 mm |
| Dimming mode | AVAILABLE 0-10V | AVAILABLE 0-10V | AVAILABLE 0-10V | AVAILABLE 0-10V | AVAILABLE 0-10V |
| PF | ≥0.95 | ≥0.95 | ≥0.95 | ≥0.95 | ≥0.95 |
| Efficiency | ≥87% | ≥87% | ≥87% | ≥87% | ≥87% |
| THD | ≤10 | ≤10 | ≤10 | ≤10 | ≤10 |
| Operating Frequency | 50/60 Hz | 50/60 Hz | 50/60 Hz | 50/60 Hz | 50/60 Hz |

Feature:

- Inbuilt dimming circuit on PWM (0-10v dc) signal for smart light (≥60w)
- Short circuit, LED Open voltage, Over voltage, Over temperature protection Fully potted IP66 driver design
- Compatible with various controller brands
- Potted driver available in Extrusion casing with Ip66
- Withstand surge upto 6kV
- Compliance with safety standard IS 15885 Part 2 sec 13
- Compliance with EMC standards IEC 61 547

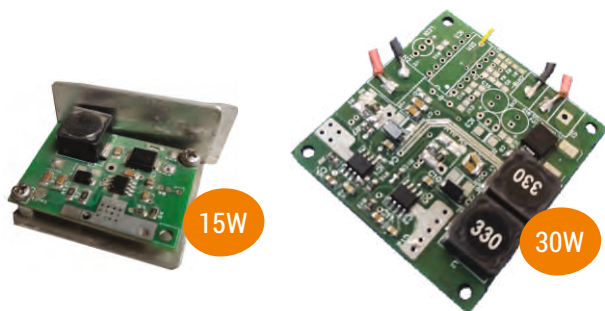
Application:

AC smart lighting applications

Electronics

DC Driver

DC drivers are constant current led drivers specially developed for use in solar applications. These drivers have in-built intelligence and programmable dimming control for power saving. They range from 15W to 30W, with 12V / 24V output voltage. Nessa DC drivers are compatible with charge controllers of all leading brands for OEMs



| Driver | 15W | 25W | 30W |
|---------------|-----------------|-----------------|-----------------|
| Model Name | NES-DDC-15-1836 | NES-DDC-25-2736 | NES-DDC-30-1836 |
| Voltage Range | 18-36V | 27-36V | 18-36V |
| Current | 350 to 700mA | 350 to 700mA | 700 to 1400mA |
| Input Power | 15W Maximum | 25W Maximum | 30W Maximum |
| Input voltage | 12V DC | 24V DC | 12V DC |
| Dimension | 45x30x10 mm | 45x30x10 mm | 55x50x20 mm |

Application:

Suitable for solar street light, solar flood light, solar high-mast lighting applications

Feature:

- Over voltage, Open Voltage, Short circuit protection
- Suitable for dry and wet locations
- Available in plastic or MS casing Compact design for easy mounting

Solar Charge Controller Combo

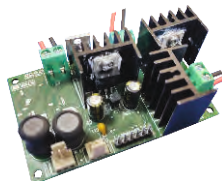
Solar charge controller combo is led driver with in-built charge controller specially developed for low-cost and highly efficient solar street light applications. The combo card has in-built intelligent and programmable dimming control for power saving. Nessa combo cards are an effective, reliable, and low-cost solution for small-size solar street lighting applications. With special built-in AI algorithms, these combo cards are guaranteed to increase overall operating hours and the life of the battery by an extra 50%.

PWM Based

| Driver | 15W | 18W | 25W | 30W |
|---------------|--------------------|--------------------|--------------------|--------------------|
| Model Name | NES-SCON-15-1836P | NES-SCON-18-1836P | NES-SCON-25-1836P | NES-SCON-30-1836P |
| Voltage Range | 18-36V | 18-36V | 18-36V | 18-36V |
| Current | 350 to 700mA | 350 to 700mA | 500 to 1000mA | 500 to 1400mA |
| Input Power | 6-15W | 15-18W | 18-25W | 25-30W |
| Input voltage | 12V DC | 12V DC | 12V DC | 12V DC |
| Solar Panel | 60W | 75W | 100W | 120W |
| Dimension | 70x35x30 mm | 70x35x30 mm | 80x50x30 mm | 80x50x30 mm |
| Potting | AS PER REQUIREMENT | AS PER REQUIREMENT | AS PER REQUIREMENT | AS PER REQUIREMENT |
| Dimming | Available | Available | Available | Available |

MPPT

| Driver | 15W |
|---------------|--------------------|
| Model Name | NES-SCON-15-1836M |
| Voltage Range | 18-36V |
| Current | 350 to 700mA |
| Input Power | 6-15W |
| Input voltage | 12V DC |
| Solar Panel | 75W |
| Dimension | 85x65x35 mm |
| Potting | AS PER REQUIREMENT |
| Dimming Mode | Available |



Application:

Solar street light, solar flood light, solar high-mast lighting, and other outdoor lighting applications

Feature:

- Intelligent monsoon dimming
- Battery level indicator
- More efficient charging
- Compatible with any branded DC driver
- Reverse Battery Protection, Reverse Panel Protection, Output short circuit Protection, Battery Over Voltage Protection, Low Battery Protection.

Solar Charge Controller

Nessa solar charge controllers have been specially developed for solar-based battery-operated applications. They are available in the current range from 10 Amp to 20 Amp with 12V / 24V input Voltage. These PWM & MPPT based solar charge controllers can be used with various types of batteries such as Li-ion, LiFePO4, Lead-acid, VRLA, SMF, and Gel batteries of any brand.

PWM Based

| Model Name | NES-SCC-10 | NES-SCC-15 |
|---------------|---------------------|---------------------|
| Voltage Range | 18-36V | 18-36V |
| Input Voltage | 12V/24V & 10A | 12V/24V & 15A |
| Solar Panel | 12V 150W & 24V 300W | 12V 200W & 24V 400W |
| Potting | AS PER REQUIREMENT | AS PER REQUIREMENT |
| Dimming Mode | Available | Available |
| Dimension | 75x70x30 mm | 80x75x30 mm |



MPPT

| | |
|---------------|--------------------|
| Input Voltage | 12V 20A |
| Solar Panel | 12V 300W |
| Potting | AS PER REQUIREMENT |
| Dimming Mode | Available |
| Dimension | 130x70x50 mm |



Application:

Solar street light, solar flood light, solar high-mast lighting, and other outdoor lighting applications

Feature:

- Intelligent monsoon dimming
- Battery level indicator
- More efficient charging
- Compatible with any branded DC driver
- Reverse Battery Protection, Reverse Panel Protection, Output short circuit Protection, Battery Over Voltage Protection, Low Battery Protection.

Surge Protection Device



| Model Name | NES-SP-10 | NES-SP-20 |
|------------------|--------------|--------------|
| Voltage Range | 10kV | 20kV |
| Input Voltage | 230V AC | 230V AC |
| Potting | Available | Available |
| Safety Standards | IEC 61643-11 | IEC 61643-11 |

External 10kV & 20kV SPD available to with stand any smaller time current surge up to 20kA.

Feature:

- Compliance With Iec 61643-11 & Iec 61000-4-5
- Full Protection between Phase and Earth, Phase and Neutral, Neutral and Earth >=Ip65

Motion Sensor

A single sensor can be configured for 7 different applications

Feature:

- Only dimming after some time
- Only dusk to down
- Dusk to down with dimming after some time
- Only motion based On-off
- Motion based dimming
- Dusk to down with motion based On-off after some time
- Dusk to down with motion based dimming after some time



| Model Name | NES-MOS |
|------------------|-----------|
| Dimming Mode | Available |
| Pmax | 200W |
| Surge Protection | upto 4kV |
| Connection type | series |



AC Dusk to Down

| Model Name | NES-DAC-D2D |
|---------------|--------------------|
| Input Voltage | 230V AC |
| Potting | AS PER REQUIREMENT |
| Dimming Mode | Available |

Production and Testing Facilities



Nessa Premises



QC Department



Production



Burn Testing



Integrating Sphere



Humidity Chamber

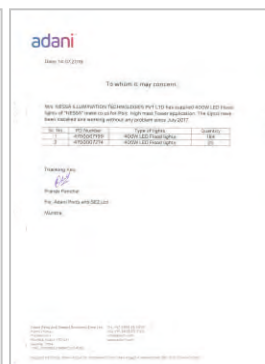
Service Centres

With a nationwide service centre coverage, Nessa has established a unique position in LED lighting industry. At Nessa Service centres, we provide service support for not just products made by NESSA but also any product supplier.

Our service personnel are well trained to understand all type of LED lighting issues and fix them in a quick and economical way.

- Nationwide Service Network
- Well Trained Service Engineers
- Repair Any Type Of LED Lights
- 72 Hours Turnaround Time

Voice of Customers





NESSA™
Lighting up miracles.....

📍 36/A Devraj Industrial Park,
Piplaj Pirana Road, Piplaj,
Ahmedabad-382405. Gujarat

☎ Ph : +91 99786 51258
: + 079-29701779

✉ Sales Inquiry : sales@nessa.in | exports@nessa.in

✉ Other Inquiry :
info@nessa.in

✉ For Service :
services@nessa.in

www.nessa.in



☎ Sales Inquiry : +91 93752 79778 | +91 93752 79779 | +91 96363 79923 | +91 80004 79780 | +91 78198 79780